



# THE *Mondavi II*

**\$669,900**




**8845 CHALK HILL LOOP**

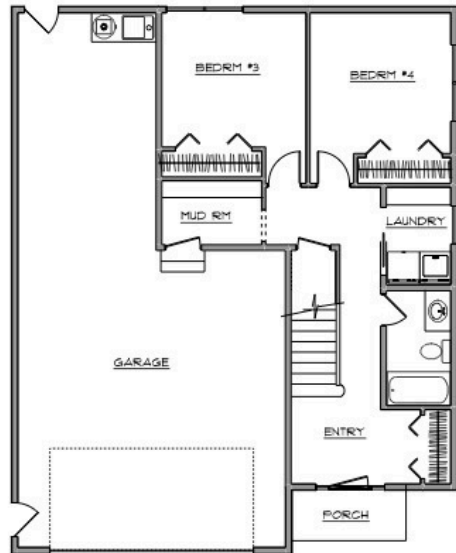
**LOT 14 BLOCK 1 SONOMA GLEN PH 4**

Located in the NEW Sonoma Glen at Westpark Subdivision with lots of greenbelts, double sidewalks and tree lined streets.

Close to schools, parks, shopping & minutes from the airport.

Moments outside your front door is Kincaid Park with groomed X-Country skiing trails and enjoy the only Sand Dunes in Anchorage.

 4 BDRM
  3 BATH
  2036 SQFT



## PROPERTY FEATURES

- Luxury Vinyl Flooring
- Quartz Countertops
- Stainless Steel Appliances
- Designer Cabinetry

**Crafted with Elegance for  
Everyday Living**

907-727-6424

MICHE.MERITHOMESAK@GMAIL.COM

MERITHOMESAK.COM

@MERITHOMESAK



SCAN ME